

I
- - -
U
- - -
A
- - -
V

Università Iuav
di Venezia



#2

TECHNICAL WORKSHOP

LAND-SEA INTERACTIONS IN MSP

Graphic Minutes by Folco Soffietti

27-10-2020



Co-funded by the European
Maritime and Fisheries Fund



Co-funded by the European
Maritime and Fisheries Fund

#2

TECHNICAL WORKSHOP

LAND-SEA INTERACTIONS IN MSP

GRAPHIC MINUTES BY FOLCO SOFFIETTI

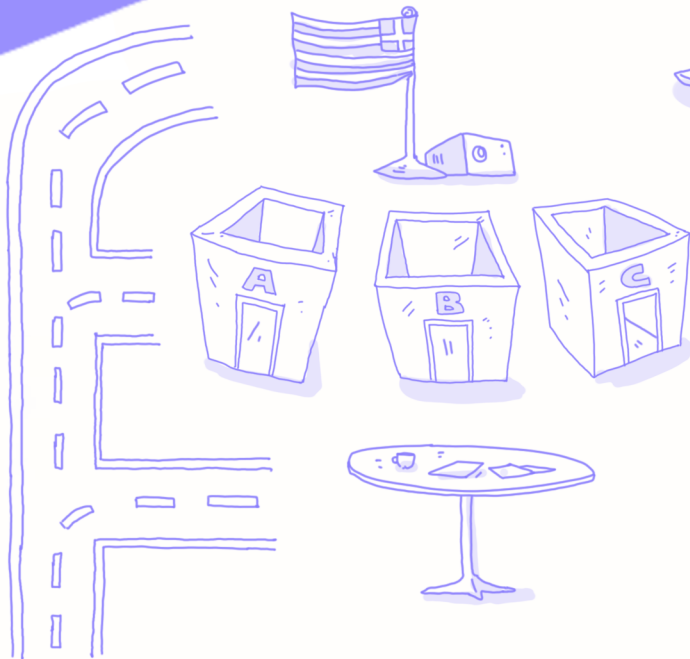
ONLINE MEETING
09:30 - 13:00 (CET)

27-10-2020



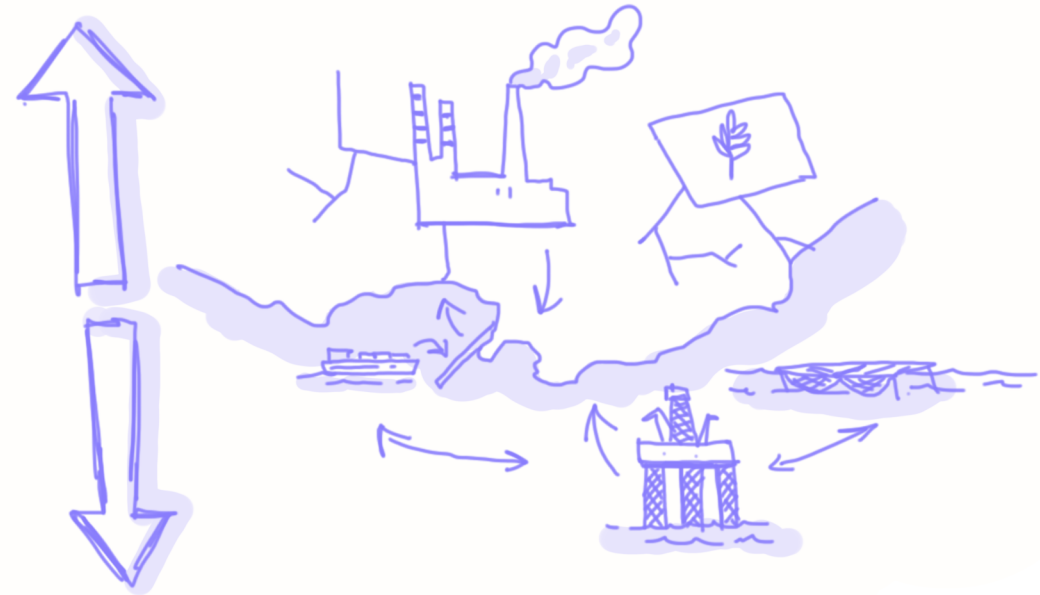
GREETINGS

PIERPAOLO CAMPOSTRINI
(CORILA-MSPMED COORDINATOR)



SEA IS NOT DIVIDED BY LAND SO THIS IS AN IMPORTANT ASPECT TO CONSIDER IN MSP.

DIFFERENT APPROACHES ARE POSSIBLE AND WILL BE EXPLORED DURING THE WORKSHOP



HOW THE WS WILL TAKE PLACE:

- PRESENTATIONS OF NATIONAL APPROACHES
- BREAKOUT ROOMS, PARTICIPANTS WILL BE DISPLACED INTO VIRTUAL ROOMS WHERE MORE INSIGHTFUL PRESENTATIONS WILL BE PROVIDED AND QUESTIONS/DISCUSSIONS WILL BE POSSIBLE.
- DEBRIEFING AND FINAL DISCUSSION

CHECKOUT THE BRAND NEW WEBSITE: WWW.MSPMED.EU



TO GET THE ENGINES STARTED: A DIGITAL WORDCLOUD WITH WORDS THAT MAY REFER TO LSI



INSTITUTIONAL SUPPORT

YVES HENOCQUE AND STELLA KYVELOU

EU MSP PLATFORM - WEST MED AND EAST MED

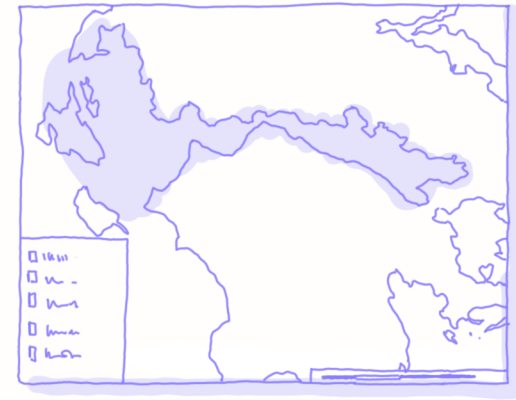
CASES STUDY SHOW THE RELEVANCE OF USING LSI ANALYSIS:
IN GREECE IN THE IONIAN SEA AND CORINTHIAN GULF HELPED ASSESS
LANDWARD LIMITS OF MSP.

ANOTHER CASE, FRENCH COAST AND 3 MILES IN THE SEA: WORKING WITH
MUNICIPALITIES

ANALYSIS IS IMPORTANT FOR MSP DEVELOPMENT.

NEW INSTRUMENT SUCH AS DESEASON MAY HELP TO EVALUATE THE CUMULATIVE
EFFECTS OF ONGOING PROCESSES.

OTHER USEFUL INSTRUMENT: VOCATIONAL MAPS THAT REFLECT A LOCAL APPROACH.



ALEJANDRO IGLESIAS CAMPOS
IOC-UNESCO

IOC HAS A MORE GLOBAL APPROACH.

THERE ARE POSSIBLE PHASES BUT IS IMPORTANT TO HAVE ALSO LOCAL
ANALYSIS, BECAUSE EVERY PART OF THE COAST IS DIFFERENT FROM
THE OTHER.

MAIN APPROACHES MAY BE USED DEPENDING ON CULTURE, POLICY, ETC.
STAKEHOLDERS CONSULTATION MAY BE A GOOD WAY TO KEEP IT LOCAL

MARINA MATKOVIC
PAP-RAC

LSI METHODOLOGY IS BEING TESTED IN MALTA AND MONTENEGRO
IN YOUNG PHASES OF THE PROJECT AND A MSP TOOLBOX IS IN DEVELOPMENT





NATIONAL SNAPSHOTS!

FRANCESCO MUSCO (IUAV-CORILA)

ITALY

INDICATIONS ABOUT LAND-SEA INTERACTIONS ARE PRESENT IN THE 2014 EU DIRECTIVE ON MSP.

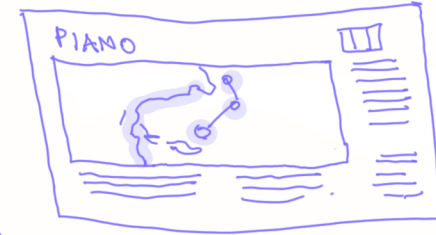
THE ANALYSIS IT'S A MINIMUM REQUIREMENT FOR A MARITIME PLAN WITHIN EU!

IN ITALY IT IS IMPLEMENTED IN THE PLANS.

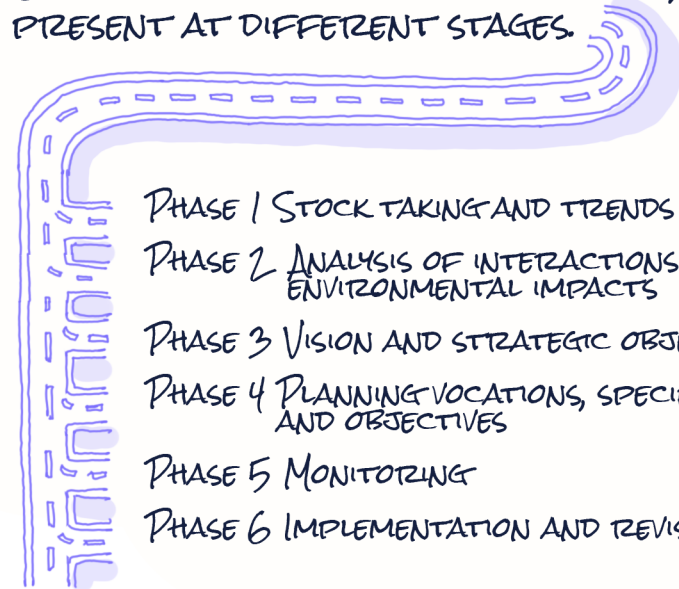
SINCE PLANS HAVE DIFFERENT PHASES, IT IS PRESENT AT DIFFERENT STAGES.



LSI ASSESSMENT WILL PROVIDE INFORMATION AND SPATIAL MEASURES TO BE IMPLEMENTED INTO THE ITALIAN MSP PLANS

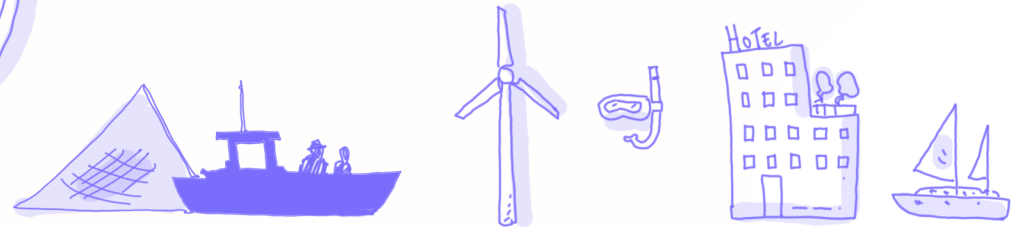


A FOCUS ON ANTHROPOGENIC PRESSURES AND NATURAL ASPECTS



- PHASE 1 STOCK TAKING AND TRENDS
- PHASE 2 ANALYSIS OF INTERACTIONS AND ENVIRONMENTAL IMPACTS
- PHASE 3 VISION AND STRATEGIC OBJECTIVES
- PHASE 4 PLANNING VOCATIONS, SPECIFIC MEASURES AND OBJECTIVES
- PHASE 5 MONITORING
- PHASE 6 IMPLEMENTATION AND REVISION

ESPECIALLY IN PHASE 1 LSI IS A KEY ISSUE FOR IDENTIFICATION AND IN PHASE 4 IS A KEY ISSUE FOR MANAGEMENT



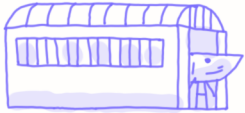
SECTORAL APPROACHES AT THE TOPIC ARE ALSO CONTEMPLATED!

OLIVIER LAROUSSINIE (MINISTRY OF THE SEA)

FRANCE

IN FRANCE LSI IS SET WITHIN THE SEA AND COAST MANAGEMENT.

IT IDENTIFIES DIFFERENT ASSETS: INDUSTRY, URBAN....

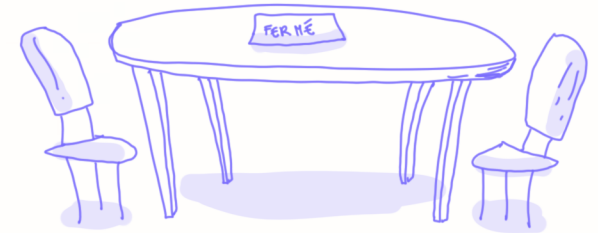
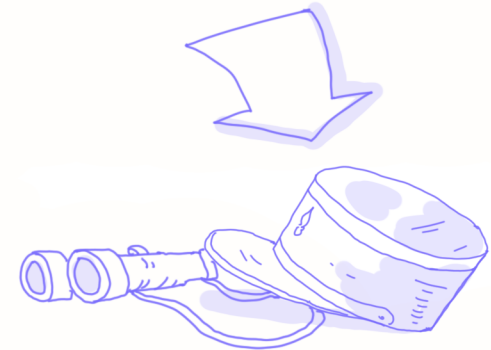


RESULTS ARE IMPLEMENTED AT A NATIONAL LEVEL.

NOWADAYS THERE IS ONE PLAN FOR BOTH LAND AND SEA PLANNING USES AND ALLOCATIONS.



IN FRANCE IT IS COMPULSORY TO HAVE SUCH ASSESSMENTS.



AT THE MOMENT NO SPECIFIC CONSULTATIONS ARE PLANNED.

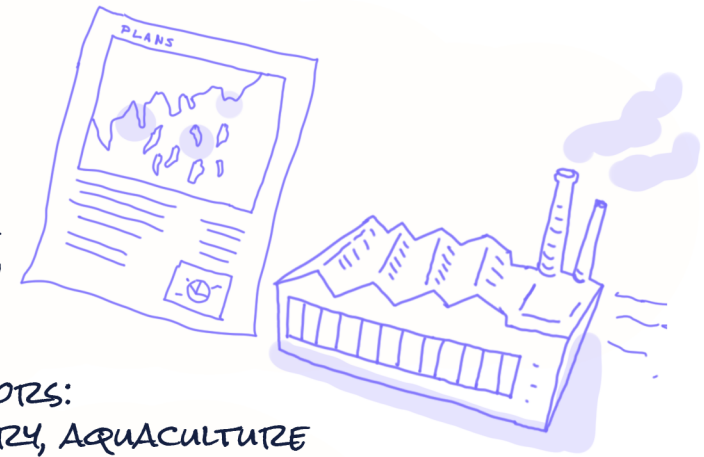
MAIN ISSUES OF THE PROCESS:

- IDENTIFY COMMON ECOLOGICAL OBJECTIVES
- ECONOMY IS A KEY ASPECT THAT MUST BE INVESTIGATED FURTHER



GREECE

LSI IS A MINIMUM REQUIREMENT IN GREECE THE MSP DIRECTIVE HAS BEEN IMPLEMENTED WITH A 2018 LAW, THE MINISTRY OF ENERGY IS THE COMPETENT BODY. LSI AND COHERENCE WITH MSP AND LAND PLANNING ARE COMPULSORY.



SPECIFIC FRAMEWORKS FOR SPECIFIC SECTORS:
RENEWABLE ENERGY SOURCES (RES), INDUSTRY, AQUACULTURE

AQUACULTURE FRAMEWORK: DEVELOPMENT OF THE SECTOR WHILE RESPECTING ENVIRONMENT PROTECTION.

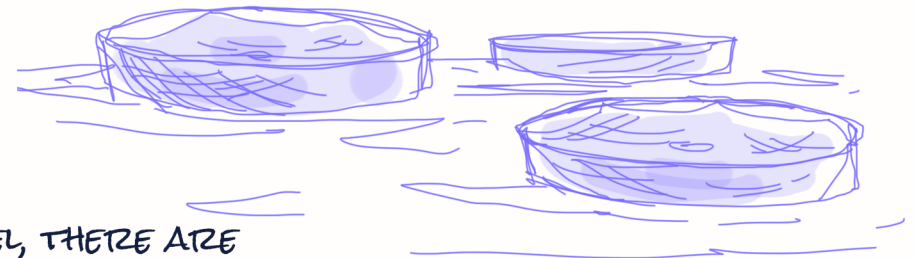
AQUACULTURE IS PROMOTED BECAUSE OF FAVORABLE OCEANOGRAPHIC ASPECTS IN GREECE



DIRECTIONS FOR APPLICATIONS DIFFER IN EACH REGION

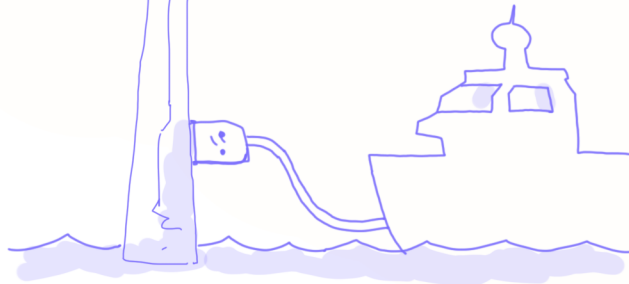
RES
FRAMEWORKS FOR WINDFARM DEVELOPMENT AT NATIONAL LEVEL, THERE ARE DIFFERENT SPECIFICATIONS TO CREATE THEM IN A SUSTAINABLE WAY, AND HARMONIZING IT WITH THE LANDSCAPE ACCORDING TO ENVIRONMENTAL SPECIFICITIES.

THERE ARE EXCLUSION ZONES (NATIONAL PARKS, SHIPPING ROUTES, WETLANDS OF INTERNATIONAL IMPORTANCE, WORLD HERITAGE SITES, MONUMENTS AND NATURE PROTECTION AREAS



IN REGIONAL AND SUB REGIONAL IT IS MORE USEFUL TO ACHIEVE GOOD ENVIRONMENTAL STATUS DEVELOPMENT AND GOALS IS IMPORTANT TO IMPLEMENT LSI.

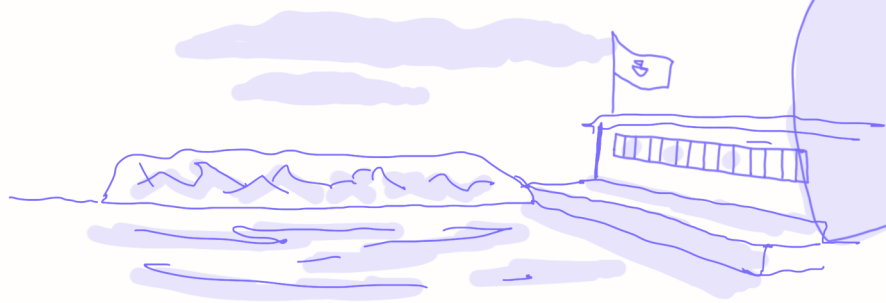
LSI IS IMPLEMENTED WITHIN STAKEHOLDERS CONSULTATION WITH COMPETENT AUTHORITIES: MINISTRIES, NATIONAL COUNCIL OF MSP AND REGIONS (ALL MINISTRIES IN THE SLIDE)



AUTZORA MESA (MITECO)

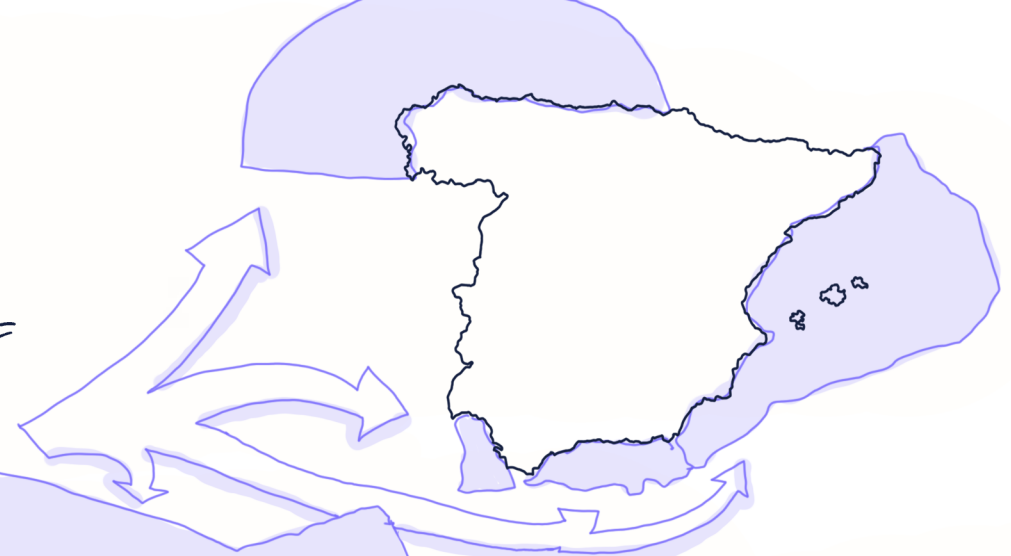
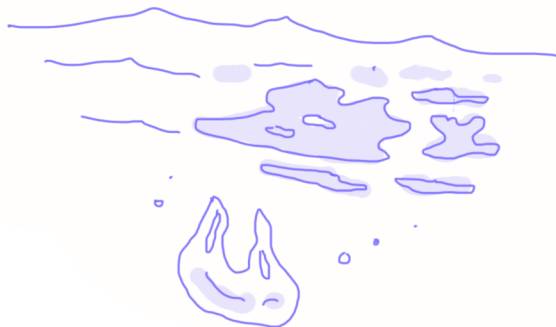
SPAIN

ROYAL DECREE OF 2017 ADDRESSED THE REQUIREMENTS OF THE 2014 EU DIRECTIVE
LSI SHOULD BE PRESENT IN EVERY MSP PLANS
EVERY MSP SHOULD CONSIDER PECULIARITY OF MARINE SUBDIVISIONS



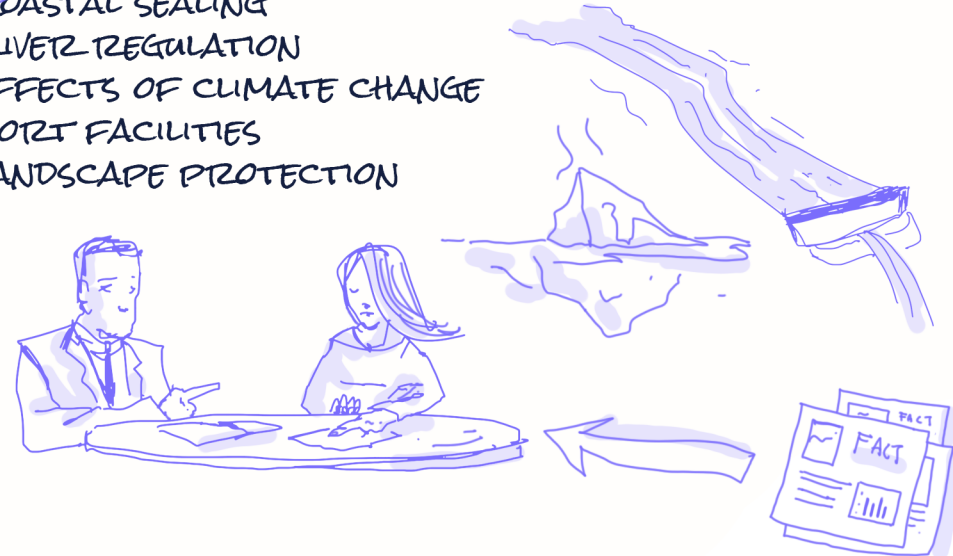
ACTUAL ANALYSIS: MAIN TOPICS LAND-SEA: POLLUTION
SEA-LAND: POLLUTION AND LAND DEMAND FOR INFRASTRUCTURES

COVER ONLY ASPECTS NOT PREVIOUSLY COVERED
WILL BE IMPLEMENTED IN THE MSP PROJECTS



TOPICS IDENTIFIED AT NATIONAL LEVELS
ANALYSIS MADE BY SUB-AREAS, FACTSHEETS WILL BE MADE

RECURRENT KEY ISSUES IN LSI ANALYSIS:
COASTAL SEALING
RIVER REGULATION
EFFECTS OF CLIMATE CHANGE
PORT FACILITIES
LANDSCAPE PROTECTION



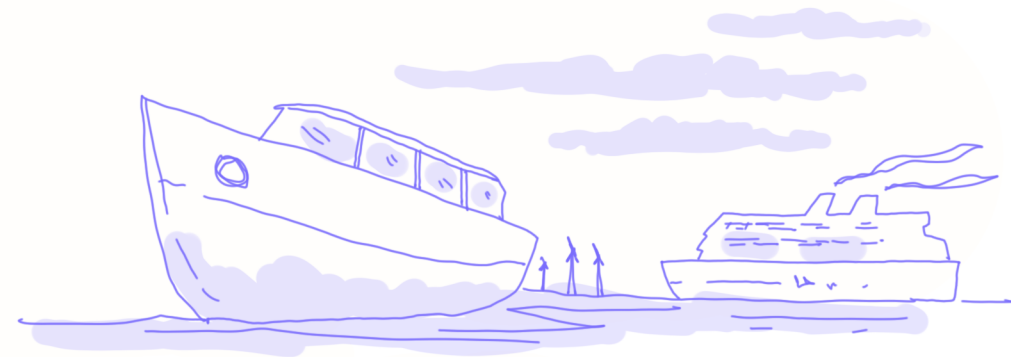
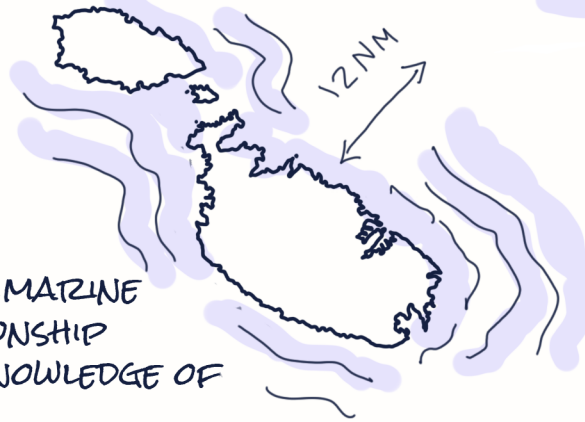
WHEN FACTSHEETS ARE READY, CONSULTATION WITH OTHER GOVERNANCE BODY WILL BE CARRIED OUT
AND LSI INCLUDED IN THE PARTICIPATORY PROCESS WITH STAKEHOLDERS

MICHELLE BORG (PLANNING AUTHORITY)

MALTA

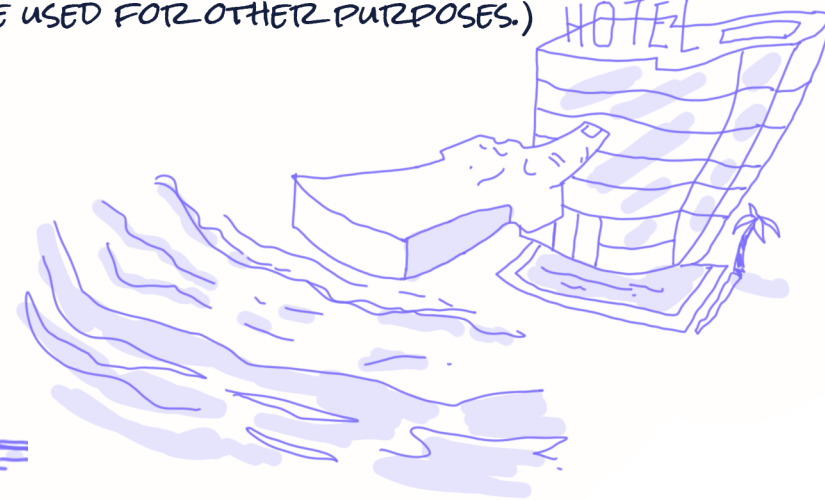
FOR MALTA LSI IS PART OF CORE HISTORY: TERRESTRIAL PLAN EXTENDED TO THE 12 NAUTICAL MILES SINCE 1992 (WITH AN ICZM APPROACH).

STRATEGIC PLAN IS NEEDED FOR MARINE PARTS WORKING ON THE RELATIONSHIP LAND-SEA SEA-LAND, BUILDING KNOWLEDGE OF POSSIBLE INTERACTIONS.



INTEGRATED APPROACH IS NEEDED SO THAT EVERY SECTOR IS PROPERLY RECOGNIZED AND IS PROPERLY DEVELOPED.

LEGITIMATE COASTAL USES (E.G. AN HOTEL CAN BE BUILT MORE INLAND TO ALLOW SPACE TO BE USED FOR OTHER PURPOSES.)



A SMALL ISLAND MEANS THE SPACE IS INTENSIVELY USED.
LSI ANALYSIS METHODOLOGY DEVELOPED WITHIN THE SUPREME PROJECT (WITH PAP-RAC)

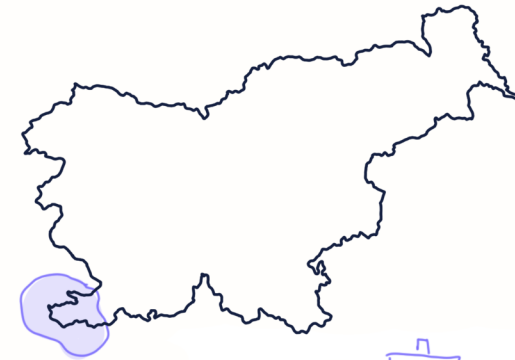


SLAVKO MEZEK (REGIONAL DEVELOPMENT CENTER KOPER)

SLOVENIA

THESE ISSUES ARE ADDRESSED IN THE SLOVENIAN PLANS
DISCUSSION WITH THE STAKEHOLDERS

2 MAIN PROJECTS: SHAPE WITH A PROPOSAL OF HARMONIZATION OF REGIMES ON THE COAST AND DEFINITION OF COASTAL BELT WHERE LSI ARE MORE PRESENT AND INTENSE) PERMANENT STAKEHOLDER COORDINATION. (PRESENTED TO MESP AND MUNICIPALITIES)



MSP AND LSI (ESPON 2010) IMPORTANT ELEMENTS HAVE BEEN DEFINED. (PRESENTED TO LOCAL STAKEHOLDERS)
MUNICIPAL SP (IN PREPARATION)

RECOMMENDATION HOW TO CARRY OUT MSP IN THE COASTAL BELT.
REGARDING ALSO TO DIFFERENT SECTIONS.
MSP AT STRATEGIC LEVEL, ICZM STRIP AT IMPLEMENTATION LEVEL

MOST IMPORTANT ACTIVITIES TO TAKE PLACE ON THE COAST. TOURISM,
MARICULTURE, MARITIME TRANSPORT.
URBAN DEVELOPMENT, FISHERIES.



ALSO NATURAL PROCESSES ARE TAKING PLACE AND WILL BE TAKING PLACE: COASTAL EROSION, MARINE FLOODING AND SALINE INTRUSION.
STAKEHOLDER CONSULTATION TAKING PLACE THROUGHOUT ALL THE PROCESS. MSP PROCESS: STAKEHOLDERS AND PUBLIC PRESENTATION



BREAKOUT ROOM A LSI ANALYSIS METHODOLOGY AND SCALE

1. HOW DID YOU STRUCTURE LSI ANALYSIS? DID YOU PRIORITIZE INTERACTIONS BASED ON THEIR RELEVANCE? IF YES, WHAT CRITERIA DID YOU USE?
2. DID YOU SUPPORT LSI ANALYSIS WITH MAPS? WHAT KIND OF MAPS?
3. AT WHAT SCALE DID YOU DEVELOP LSI ANALYSIS (NATIONAL, MATRINE REGION, OTHERS)? HAVE YOU IDENTIFIED LSI HOT-SPOTS? IF YES, HOW?

SOME COUNTRIES USE MATRIX TO IDENTIFY MAIN ISSUES (E.G. CAUSE OF ENVIRONMENTAL IMPACT, AFFECTED SECTORS, ANALYSIS TOOLS, ETC.)

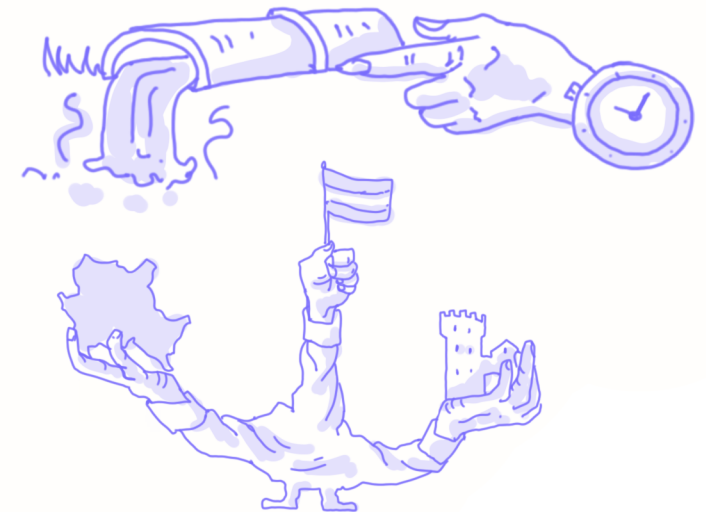
FOR INSTANCE, SPAIN GAVE DIFFERENT PRIORITY TO BEACH LOSS BASED ON CURRENT TRENDS OR POTENTIAL FUTURE TRENDS.

RISKS SUCH AS BEACH RETREATS

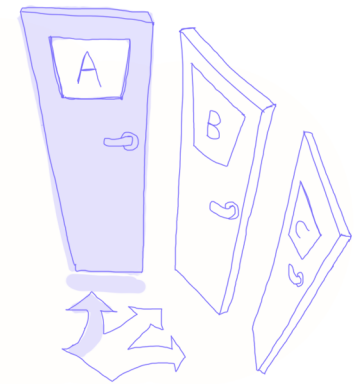


MATRIX

LSI					
PRESSURES					●
		●			
			●		
	●				●
			●		



MAINLY BASED ON EXPERT APPROACH AND KNOWLEDGE
 SPECIFIC CONTEXT (COUNTRY SPECIFIC APPROACH, NO SILVER BULLET)
 MANAGING DIFFERENT SCALE OF ANALYSIS (NATIONAL, REGIONAL, LOCAL)
 LOCAL STAKEHOLDERS, COMMUNITY.



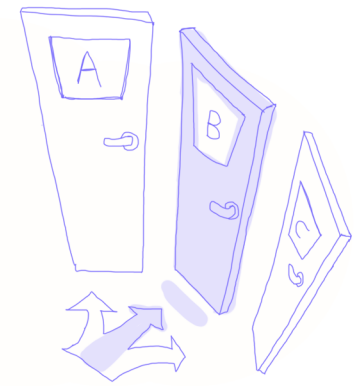
MODERATOR: MARTINA BOCCI
 SPEAKERS:
 SPAIN: MIRIAM GARCIA SALA
 MALTA: ALEXIA VELLA
 ITALY: MARTINA BOCCI
 FRANCE: PATRICIA SALA

BREAKOUT ROOM B

LSI KEY NATURAL AND ANTHROPOGENIC DRIVERS AND PRESSURES 2: IDENTIFICATION AND MANAGEMENT

1. WHAT KIND OF LSI DRIVERS DID YOU IDENTIFY? WHAT WAS THE APPROACH FOR THEIR SELECTION?
2. DID YOU HAVE ANY ISSUE WITH LACK/INADEQUACY OF KNOWLEDGE/DATA?
3. HOW DO YOU PLAN TO CONSIDER/MANAGE LSI DRIVERS THROUGH MSP PROCESS? HOW THE RESULTS OF LSI ANALYSIS SHOULD BE REFLECTED IN THE PLANNING PHASE?

ITALY METHODOLOGY FOR LSI ANALYSIS WAS BASED ON STEPS TO IDENTIFY TERRITORIAL ELEMENTS (BOUNDARIES, ETC.), IDENTIFY MAIN FACTORS DETERMINING LSI, IDENTIFICATION OF LSI HOTSPOTS IN ORDER TO CREATE RECCOMANDATIONS TO BE IMPLEMENTED IN THE PLAN (MATRIX EMPLOYED)



MODERATOR: NEIL ALLONCLE
SPEAKERS:

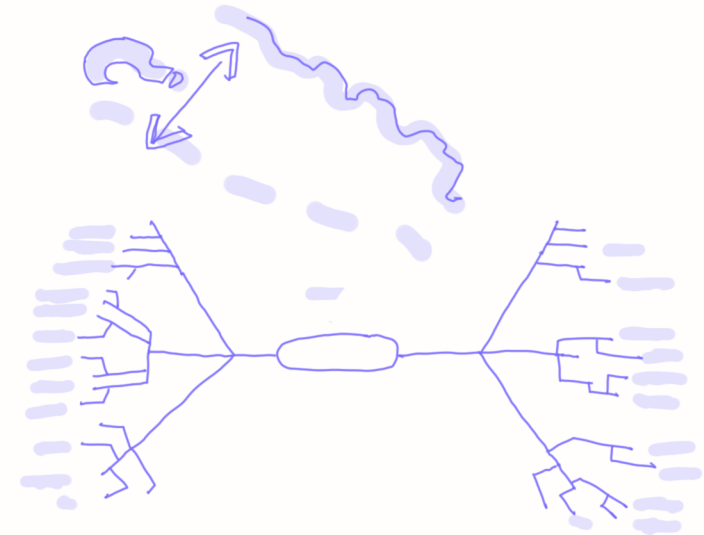
ITALY: GIULIO FARELLA

FRANCE: NEIL ALLONCLE

GREECE: TONIA KOUTSOPOULOU

SLOVENIA: SLAVKO MEZEK

SPAIN: CARLA MURCIANO VITTO



FRANCE: SUBDIVISION AND IDENTIFICATION ON ISSUES AND ASSETS, FOR INSTANCE A MIND MAP TAKING INTO ACCOUNT ALL POSSIBLE INTERACTIONS RESULTED INTO IDENTIFICATIONS OF POSSIBLE ACTIONS TO BE UNDERTAKEN.

LSI ANALYSIS TO BE SHARED WITH STAKEHOLDERS AND COMPETENT AUTHORITIES.

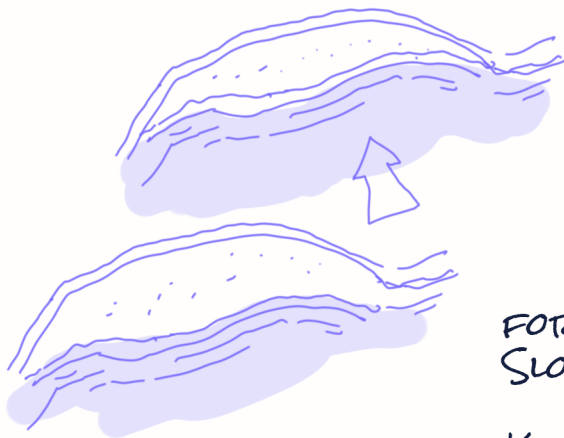
GAP: REGIONAL AUTHORITIES HAVE NO POWER TO PROTECT CULTURAL HERITAGE BEYOND TERRESTRIAL BORDERS OR ESTABLISH LIMITATION FOR MARITIME INFRASTRUCTURES, THEY ARE ASKING FOR MORE TOOLS TO PROTECT MARINE AREAS NEAR BICs (E.G. PEINE DEL VIENTO DI CHILLIDA).

MS PLANS MAY ENSURE FURTHER PROTECTION AND NEW ACTIVITIES MIGHT BE MOVED AWAY FROM BICs. ALL THIS IS TO BE AGREED WITH REGIONAL GOVERNMENTS.



WHEN IMPACTING SEA LANDSCAPE AND NEARBY CULTURAL HERITAGE SITES: SPECIAL SITES TO BE DESIGNATED A BIC AND A CATALOGUE CREATED AT NATIONAL LEVEL.

AT REGIONAL LEVEL SPECIAL PLANS FOR PROTECTION AND CATALOGUES WITH SUBCATEGORIES OF BICs. BICs ARE IDENTIFIED ON MAPS.



FORECAST OF CLIMATE CHANGE MODIFICATIONS
SLOVENIA: NOT MUCH SPACE LEFT FREE

KEY ISSUES, THERE ARE ASPECTS THAT CAN BE SPREAD FURTHER THAN THE LOCAL LEVEL PRIORITIZATION. VERY DYNAMIC PROCESSES. SPECIFICITY OF DIFFERENT NATURAL SITUATIONS (LAGOONS, DELTA, ETC.) URBAN DEVELOPMENT ONE OF MAJOR DRIVERS IN LSI. HAS TO BE MANAGED (SOURCE OF ECONOMY BUT ALSO LITTER AND POLLUTIONS ISSUES: EROSION.

BREAKOUT ROOM C

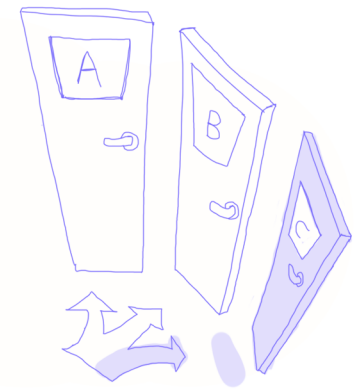
INTERACTION AND INTEGRATION OF LSI ANALYSIS FOR MSP WITH OTHER PLANNING AND MANAGEMENT INSTRUMENTS (WFD, ICZM, COASTAL RISK MANAGEMENT, URBAN AND LAND PLANNING, ETC)

1. FOR LSI ANALYSIS COULD YOU RELY ON RESULTS FROM OTHER PLANNING PROCESSES?
2. DID YOU UNDERTAKE AN ANALYSIS OF PLANNING AND MANAGEMENT INSTRUMENTS IN PLACE AS PART OF YOUR LSI ANALYSIS (E.G. IDENTIFICATION OF GAPS, CONFLICTS, SYNERGIES)?
3. HOW DO YOU THINK INTEGRATION OF RESULTS OF LSI ANALYSIS WITH OTHER PLANNING AND MANAGEMENT INSTRUMENTS SHOULD BE ACHIEVED? HAS STAKEHOLDER ENGAGEMENT A ROLE IN THIS?

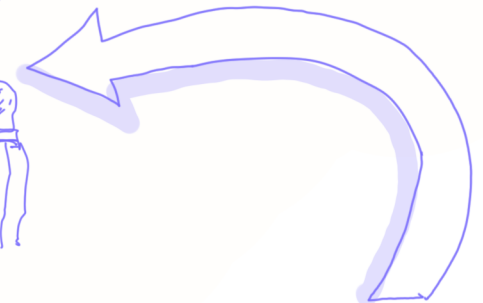
LAND SEA INTERACTIONS WITH GOVERNANCE SCHEMES, SOMETIMES ACCORDINGLY, SOMETIMES IN CONTRAST.

ITALIAN METHODOLOGY BASED ON AREA OF INFLUENCE OF DIFFERENT SECTORS AND PRIORITIZATION OF LSI HOTSPOTS BASED ON THE COMPLEXITY OF THE TOPICS.

THE STEP-WISE ANALYSIS IS CARRIED OUT FROM LARGE TO DETAIL (CURRENTLY IN PHASE 4) INCLUSION OF STAKEHOLDERS CONSIDERED FUNDAMENTAL AND ALREADY BEEN EXPERIENCED AT REGIONAL LEVEL

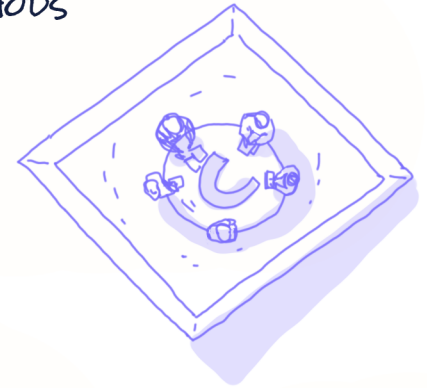


MODERATOR: FRANCESCO MUSCO
SPEAKERS:
ITALY: NICCOLÒ BASSAN
FRANCE: OLIVIER LATROUSSINIE
MALTA: MICHELLE BORG
GREECE: HATZIS KOKKOSSIS
SPAIN: ANA LLORET

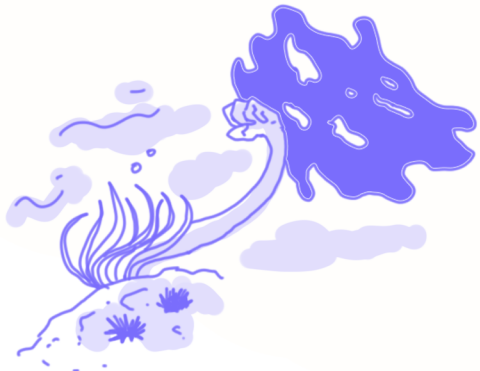


MALTA RESULTS FROM DIFFERENT FRAMEWORKS, E.G. WATER FRAMEWORK, DIRECTIVE AND MARINE STRATEGY FRAMEWORK DIRECTIVE, NATURE DIRECTIVES, ARE AMONG THE TOOLS THAT MIGHT FURNISH RESULTS USEFUL FOR LSI ANALYSIS (MONITORING)
LSI ANALYSIS AND STOCK-TAKE ARE INHERENTLY BUILT IN THE MSP PROCESS, THE RESULTS WILL BE PRESENTED IN REPORTS AND WILL BE SUBJECT TO PUBLIC CONSULTATION.

GREECE: BRING SOMETHING NEW (IN RAPPORT TO OLD PLANNING METHODS
 EMPHASIS ON THE SPATIAL CHARACTER, THE INTENSITY OF USE AND
 INTERACTIONS. CONSIDERING THE INSTITUTIONAL FRAMEWORK,
 THE ENVIRONMENTAL MANAGEMENT AND DIFFERENT PERSPECTIVES.



LSI SUPPORT OF EXISTING MSP. LEGAL ASSETS WILL COME LATER.
 RELEVANCE OF LOCAL AUTHORITIES AND INSTITUTIONS THAT CAN PLAY A KEY ROLE,
 THEY ARE IN FRONT OF THE COAST. HOW LOCAL PERSPECTIVE IS PRESENTED IN
 MSP? IN THIS PHASE MSP IS SPREAD TO LARGE AREAS. HOW CULTURAL
 HERITAGE CAN BE INCLUDED IN LSI?



SLOVENIA: MANY CHALLENGES IDENTIFIED: DEVELOPMENT OF MANAGEMENT
 CAPACITIES, STRATEGIES, NEW OPPORTUNITIES OR ISSUES: CLIMATE CHANGE, BLUE
 GROWTH, MSP...

IN EVALUATING LSI REGARDING HUMAN ACTIVITIES 3 PARAMETERS: ENVIRONMENTAL
 LSIs, SOCIO-ECONOMIC LSIs, TECHNICAL LSIs

MAIN DISCUSSION

ISSUE: FIND INFORMATION EASILY
(NATURE, ECONOMY, ESPECIALLY ECONOMY)
AND ALSO THE COMMUNICATION

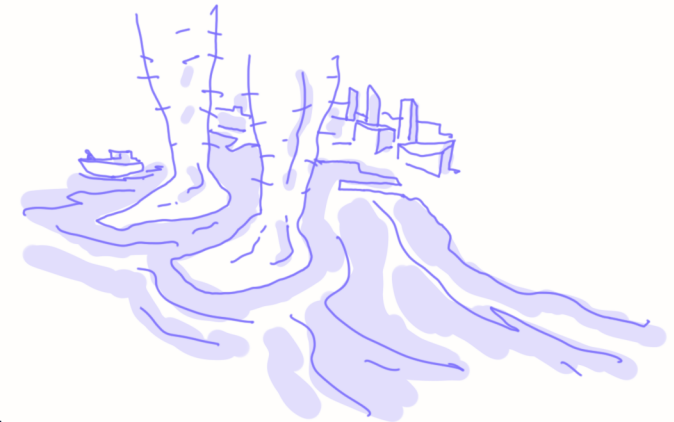


GENERAL QUESTION: IS THERE A POTENTIAL RISK WHILST WORKING ON LSI
THAT OUR FOCUS IS STEERED BACK TO THE COAST SINCE THE ULTIMATE
DELIVERABLE IS A PLAN THAT GUIDES SPATIAL ALLOCATION FOR BLUE
GROWTH?

THERE IS A RISK BUT THERE IS ALSO A CHALLENGE TO REFINE OUR TOOLS
LSI IS LOCAL THEREFORE CONSIDER LOCAL STAKEHOLDERS (GOVERNANCE)
LSI SHOULD BE IMPLEMENTED INTO MSP PROCESS
ENGAGE THE PUBLIC

CONSIDER ROLE OF DIFFERENT ADMINISTRATIONS

KEEP IN MIND SPATIAL DIMENSION (PROBLEM OF SCALES)



USEFUL TO ASSESS HUMAN IMPACT AND
AREAS STRONG IN RESILIENCE

