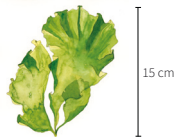


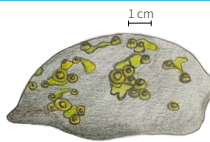
Enteromorpha
Ulva compressa



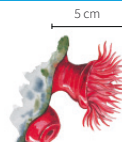
Quercia marina
Fucus virsoides



Lattuga di mare
Ulva lactuca



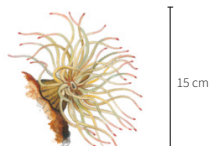
Spugna perforante
Cliona orientalis



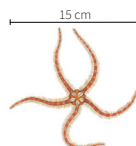
Pomodoro di mare
Actina equina



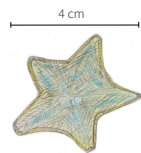
Anemone tigrato
Actinia cari



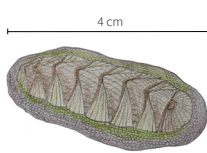
Anemone
Anemonia viridis



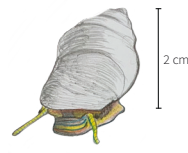
Stella serpentina
Ophioderma longicaudum



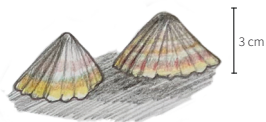
Stellina grassa
Asterina gibbosa



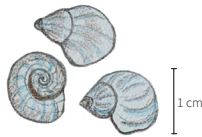
Chitone oliva
Chiton olivaceus



Cornetto comune
Monodonta turbinata



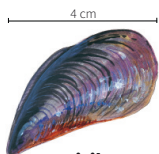
Patella comune
Patella caerulea



Littorina scura
Melarhapha neritoides



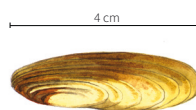
Torretta comune
Cerithium vulgatum



Mitilo
Mytilus galloprovincialis

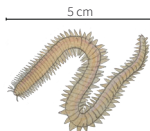


Ostrica zig zag
Ostrea stentina



Dattero di mare
Lithophaga lithophaga

LE DIMENSIONI SI RIFERISCONO A QUELLE PIÙ COMUNEMENTE RAGGIUNTE DAGLI ESEMPLARI ADULTI



Polichete
Polychaeta (Phylum)



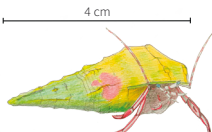
Vermeto del marciapiede
Dendropoma cristatum



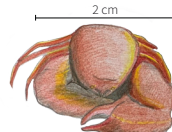
Dente di cane perforato
Perforatus perforatus



Dente di cane di montagui
Chthamalus montagui



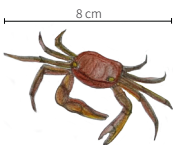
Paguro zamperosse
Clibanarius erythropus



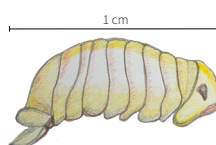
Porcellana pelosa
Porcellana platycheles



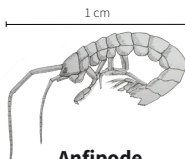
Granchio di luna
Xantho poressa



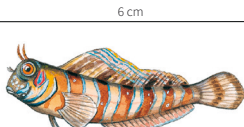
Granchio corridore
Pachygrapsus marmoratus



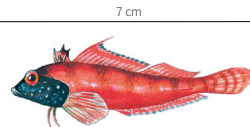
Isopode - pulce di mare
Sphaeroma serratum



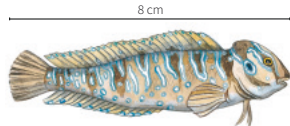
Anfipode
Ceradocus sp.



Bavosa sfinge
Aidablennius sphyinx



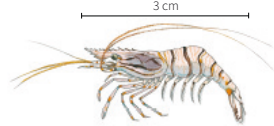
Peperoncino rosso
Trypterigion tripterotonotum



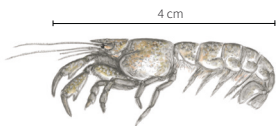
Bavosa pavone
Salaria pavo



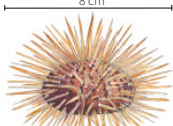
Succiascoglio
Lepadogaster lepadogaster



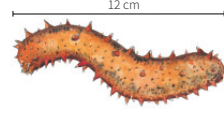
Gamberetto di porto
Palaemon elegans



Corbola
Upogebia sp.



Riccio edule o riccio femmina
Paracentrotus lividus



Cetriolo di mare
Holothuria [Holothuria] tubulosa

LE DIMENSIONI SI RIFERISCONO A QUELLE PIÙ COMUNEMENTE RAGGIUNTE DAGLI ESEMPLARI ADULTI